

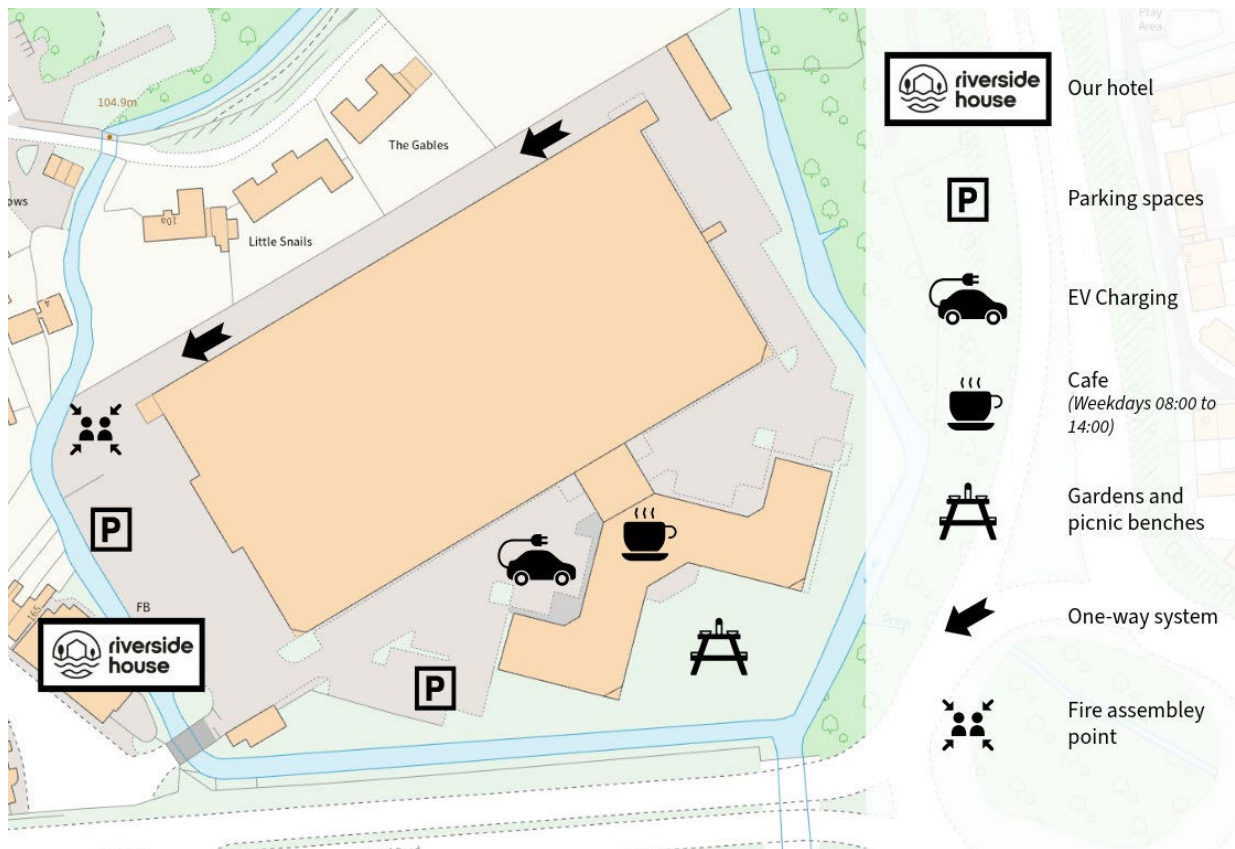
Directions

The access to the hotel is located at Watermoor Point, a business park in Cirencester.

Follow signs for Watermoor Point, GL7 1LF. We are located at the end of Watermoor Road, a terraced residential street.



Site map

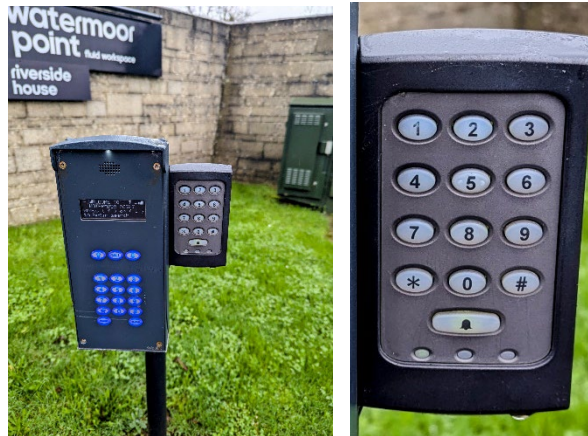


Gates and Parking Barriers

The parking barriers will automatically open for you.

If you arrive after 6pm or at weekends you may find black gates are closed.

Use your 6 digit code on this keypad and the gates will open.



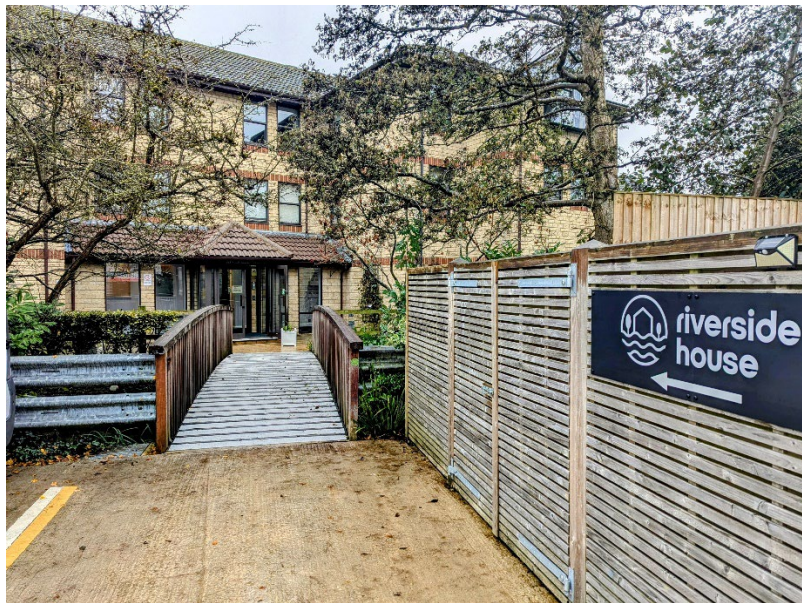
Parking

As you enter the site, the hotel is located to your **left**. Park anywhere on site.

We have 210 parking spaces so you should be able to find a space easily.

Entry into the property

Cross the bridge to enter the property. Use your 6 digit code to enter the property.



Keybox

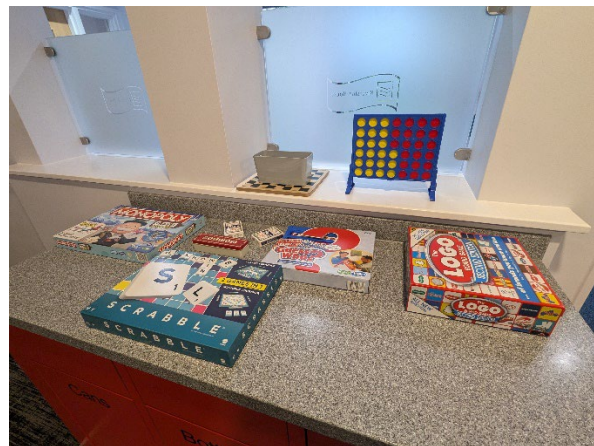
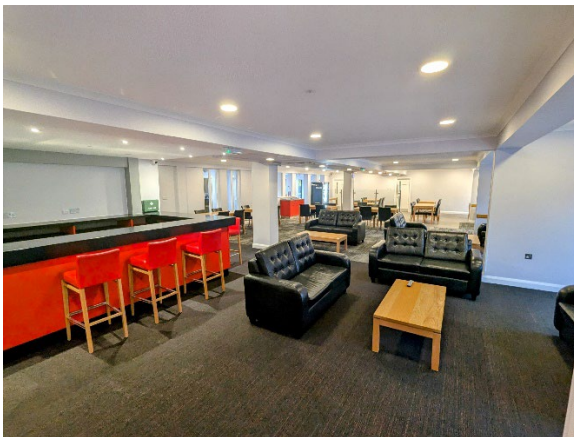
Once you enter the property, turn right and follow signs to the keyboxes and use your 4 digit code to access them.

In your keybox will be your room key, but also a **black fob** which can use instead of the door codes. Just touch it to the reader.



Lounge

Please feel free to make use of the lounge. There is a vending machine, games, a TV and sofas.



Housekeeping

If you are staying more than one night, your room will be cleaned daily. If you do not want your room to be cleaned, please leave the **Do Not Disturb** sign on the outside of your door.

WIFI

WiFi Name: Riverside House

Password: Riverside24

Watermoor Point meeting rooms

If you want to book a meeting room at Watermoor Point please do so here:

<https://www.watermoorpoint.co.uk/meeting-room-bookings/>

Watermoor Point café

The café is open 08:00 till 14:00 on **weekdays**, serving sandwiches, cakes, jacket potatoes, coffee and more!



Check out

Check out is at 10:30AM.

On check out please drop your keys in the check-out box in the reception hallway.

We hope you have enjoyed your stay and look forward to welcoming you back soon.